



Tanco Autowrap Technical information

Subject	Retrofit dispenser
Description	Mounting of dispenser on clockwise rotation machine
Modified	4 April 2006
Location	Film mast
Model	Pre 1999 Tanco Autowrap machines

All Tanco Autowrap Bale Wrappers produced pre 2000 were fitted with KO stretch units. The main feature of these were there Red plastic Rollers and integrated plastic Gearbox. As this Company is no longer in business we have serious problem obtaining spare part for them. In view of this we have designed a unit (similar to our current film dispensers), that can be retrofitted on older machines. This unit has proven to offer more reliable/consistent operation, and as well as offering additional benefits to such as easy loading. In future all orders placed for KO prestretch unit, part no. D616S (70%) and D61661S (55%) will have have to be replaced with this new unit.

The new Part no. for this is: 1209150 for Clockwise rotating machines
Or 1209154 A / B for Anti-Clockwise Rotating machines

A 70 + 32% prestretch

B 55 + 32% prestretch

Please specify what gears are required when ordering.

Please find fitting instructions attached to this document.

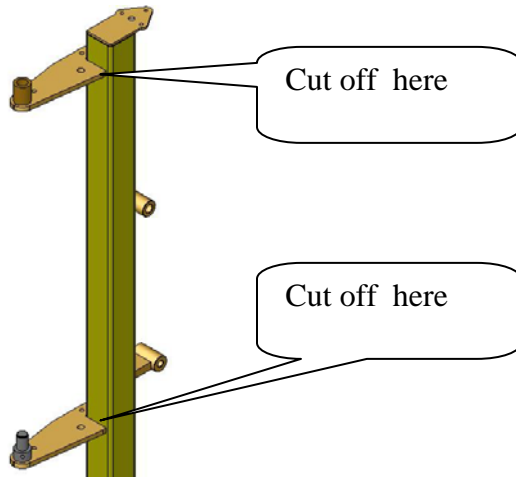
If you are unsure about this please contact Tanco Sales or Technical departments.



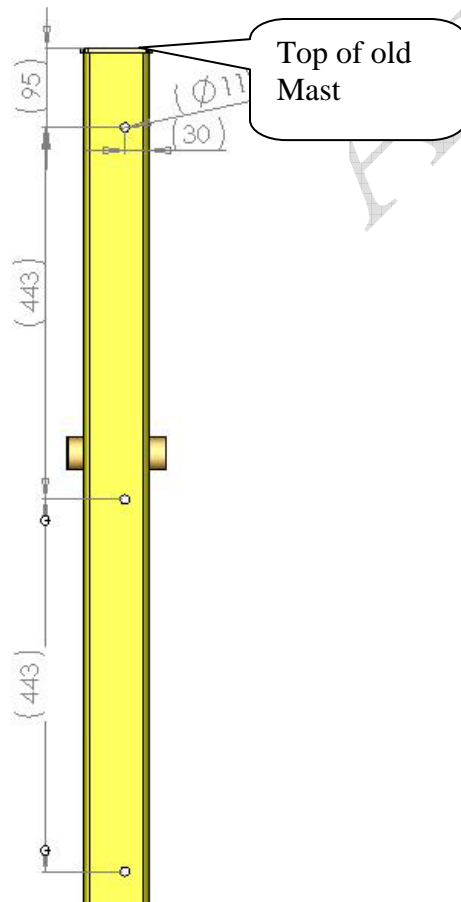
Tanco Autowrap
Technical information

Instructions for Fitting Retro fit dispenser on old KO type machines:
1209150

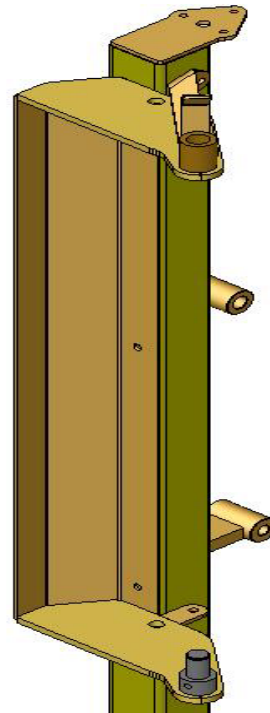
1. Remove the Profiles from the Box section:



2. Drill Holes. Clearance for M10 Bolts



- 3 Mount New Unit



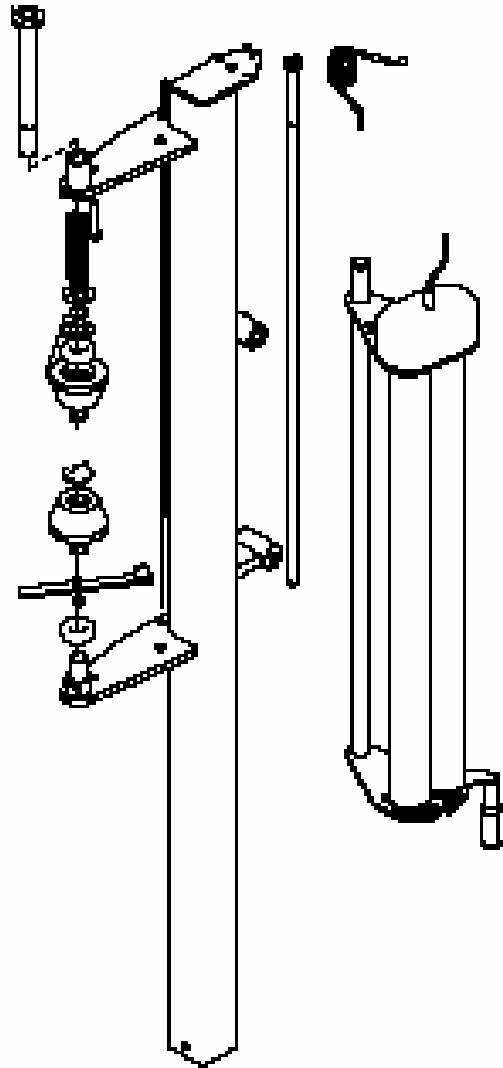


Tanco Autowrap Technical information

1209154 A / B

The dispenser for anti-clockwise rotation machines comes complete with a film mast.

This unit has been used from 1999 onwards.



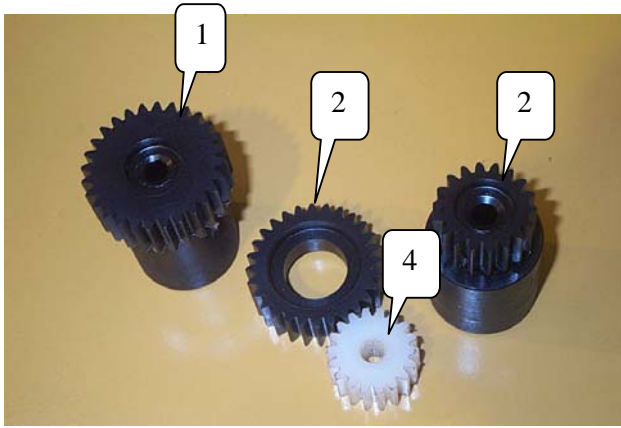
Tanco Air

Instructions for fitting DG nylon gears on KO stretch units.

Due to manufacturer of KO pressure frames going out of business, gears for these units are no longer available as spare parts.

In order to accommodate our customers still using these units we have found an alternative, that involves some more work in fitting the gears. This document outlines the procedure for fitting these new DG nylon gears.

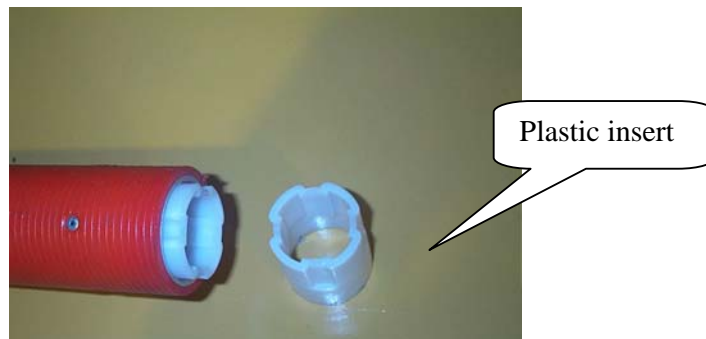
The part no. for the complete gear replacement kit is D501-16-K1.



This kit contains:

Item	Part no.	Description	Qty
1	D50105	28 tooth x 16 mm gear	2
2	D50106	18 tooth x 16 mm gear	2
3	D50107	28 tooth idle gear	2
4	D50108	18 tooth idle gear	2
		3 mm Rivets	16

1. Remove the cover from the gearbox at the base of the unit and remove the old gears.
2. Drill the 4 rivets holding plastic insert in the roller and remove the plastic insert.



3. Place the top half of the cover though the roller and insert the new gears into the Roller. Slide the boss of the Gear directly into the Roller. **N.B.** It is very important to fit the correct gear on the correct Roller. The larger is always on the Roller that lies against the slave roller. The small gear is fitted to the larger roller (if 70% stretch is used). Insert the idle gears and check that everything is rotating freely and correctly.

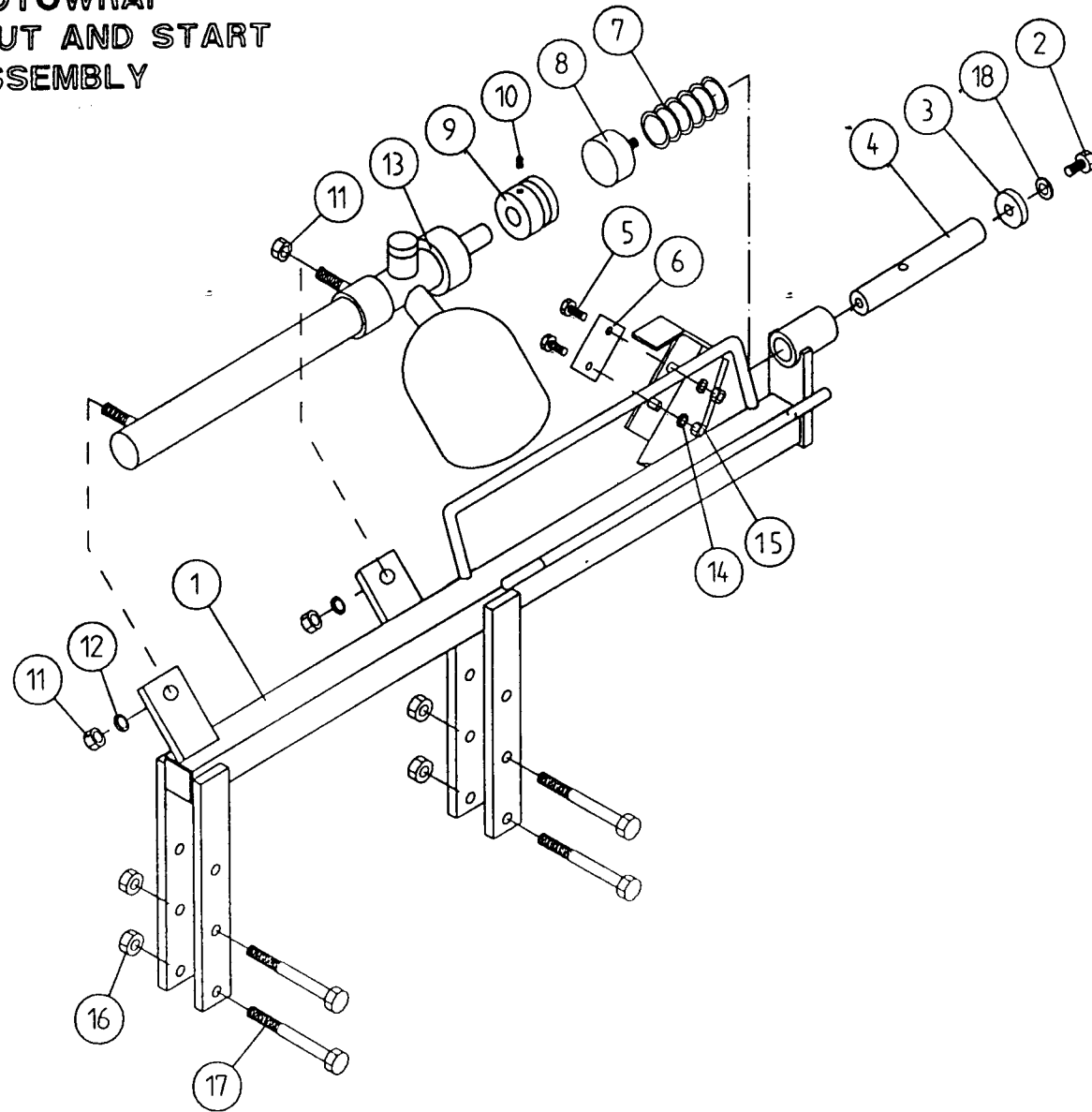


4. Drill through the old pop rivet holes with a 3 mm drill bit and insert new rivets (supplied). Apply grease liberally and replace the cover on the gearbox.
5. Repeat the process for the gearbox on the other side



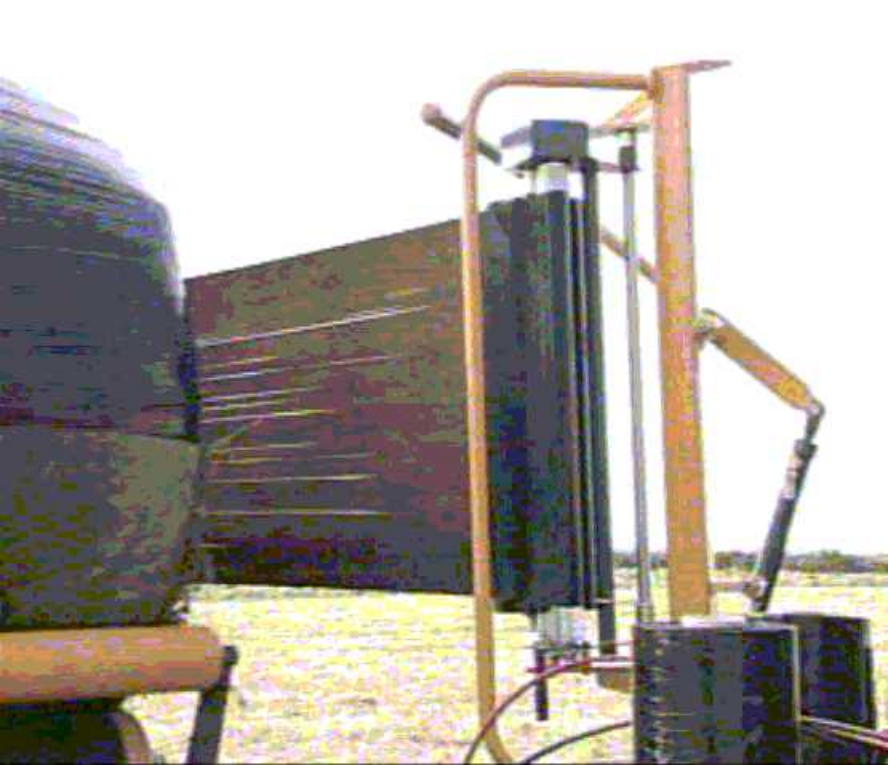


**TANCO AUTOWRAP
HYDRAULIC CUT AND START
MAIN ASSEMBLY**





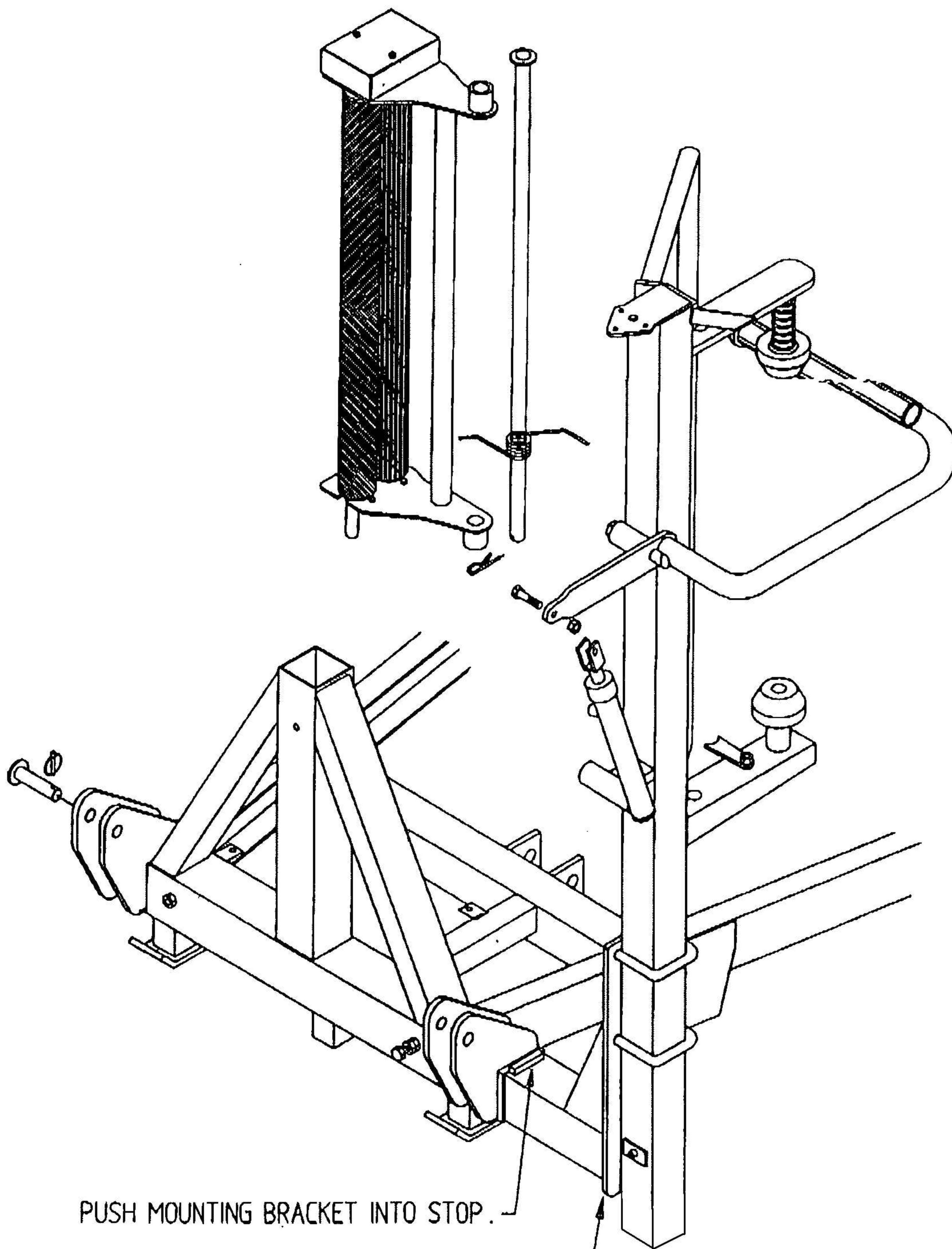








TANCO AUTOWRAP 280 S / 280 ARC MODELS
FILM DISPENSER SYSTEM



PUSH MOUNTING BRACKET INTO STOP.

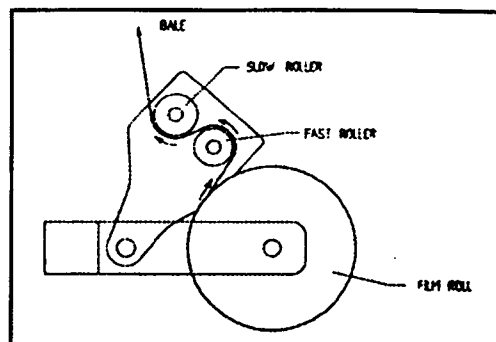
Mount plate

Tanco 1080A

5) Film

It is important that the instructions provided by the film manufacturer are followed and applied. Most film suppliers recommend a minimum of 6 layers of film for SQUARE bales and if the DM level exceeds 50%.

Always ensure that the film is threaded correctly. The film width should be reduced from 750mm to 580-610mm when applied to the bale.

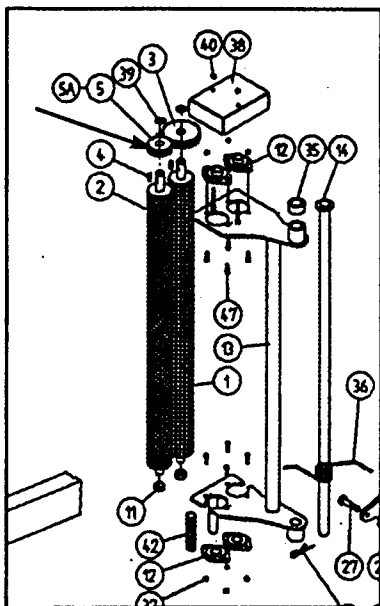


6) Film Pre-Stretch Unit

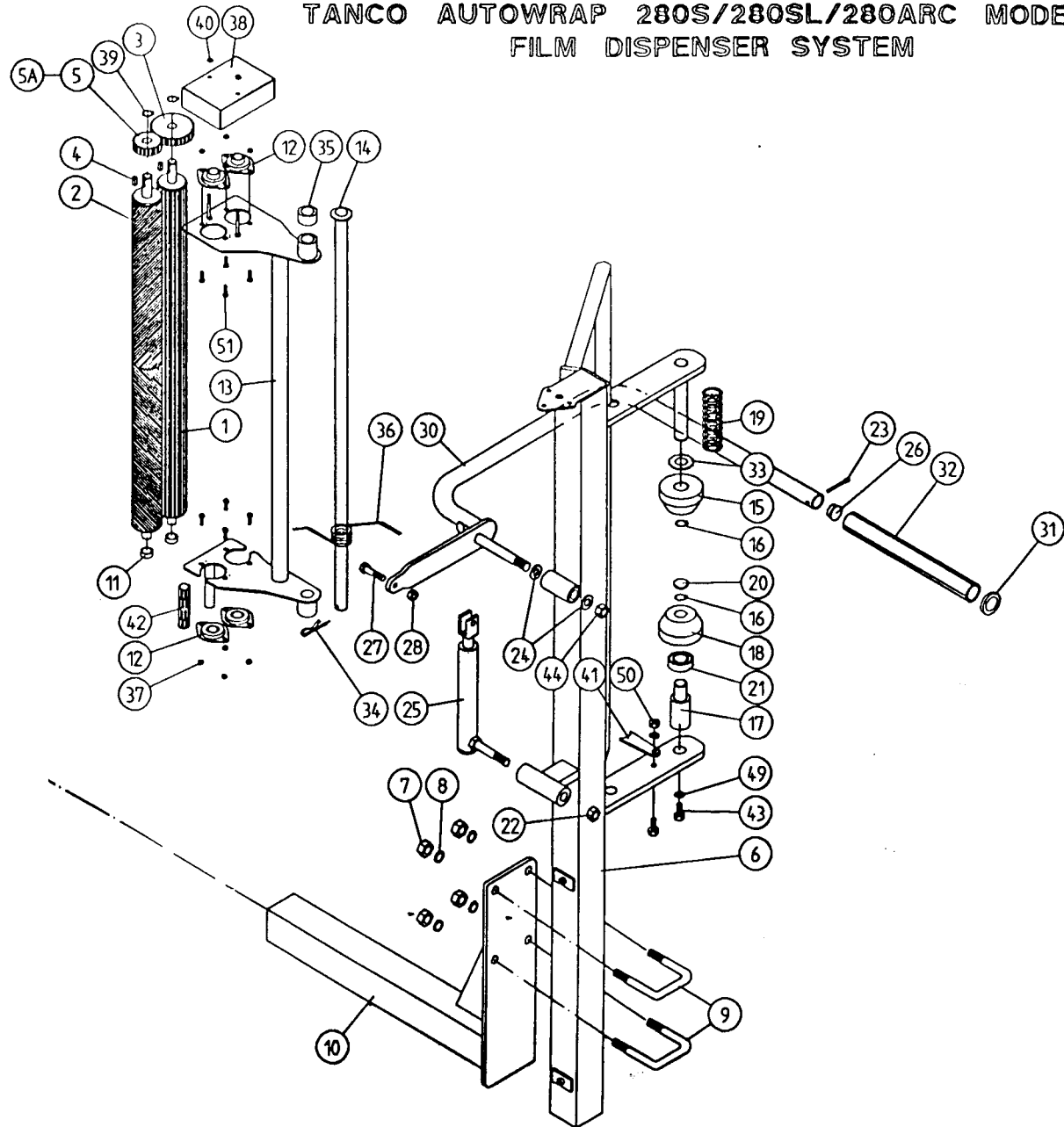
The new 2000 model has 'aluminium rollers'. It also has the facility to change the stretch from 55% (standard) to 70% (optional) by changing one gear (No. 5).

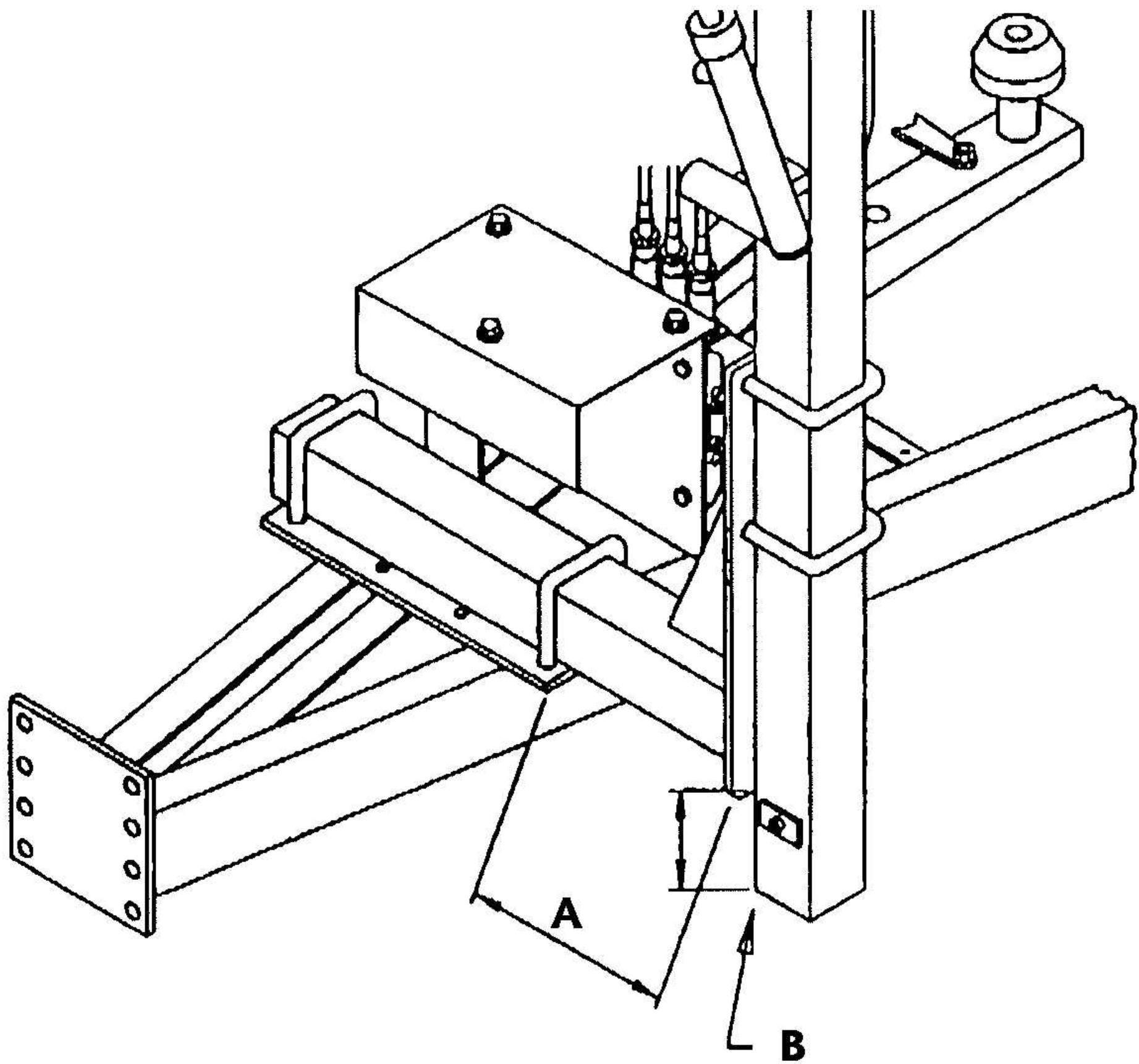
- FOR 55% STRETCH
Gear No. 5 - 39T Part No. D617-G39
- FOR 70% STRETCH
Gear No. 5A - 35T Part No. D617-G35

Adjustment is provided in the frame to enable the two gears to be fitted.



TANCO AUTOWRAP 280S/280SL/280ARC MODELS
FILM DISPENSER SYSTEM



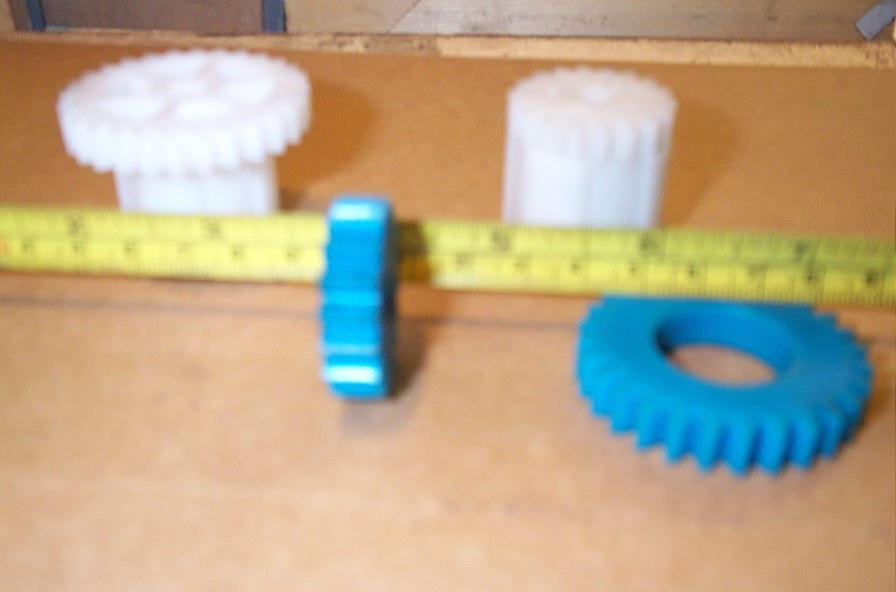


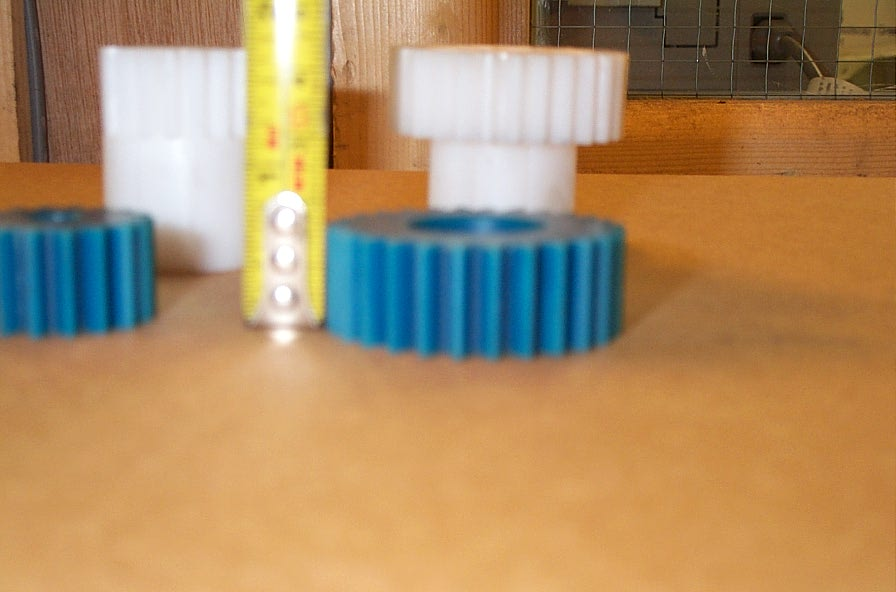




DS01-1





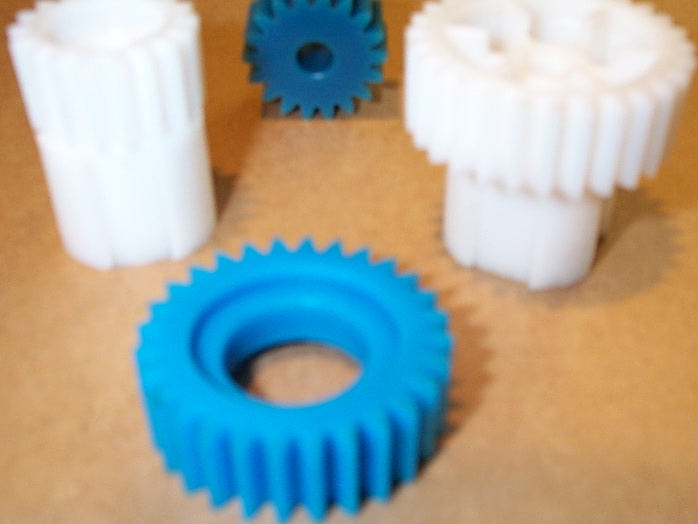














D50104



D50104



D50101



D.50102



D53107



D53106



16 ^{MM}

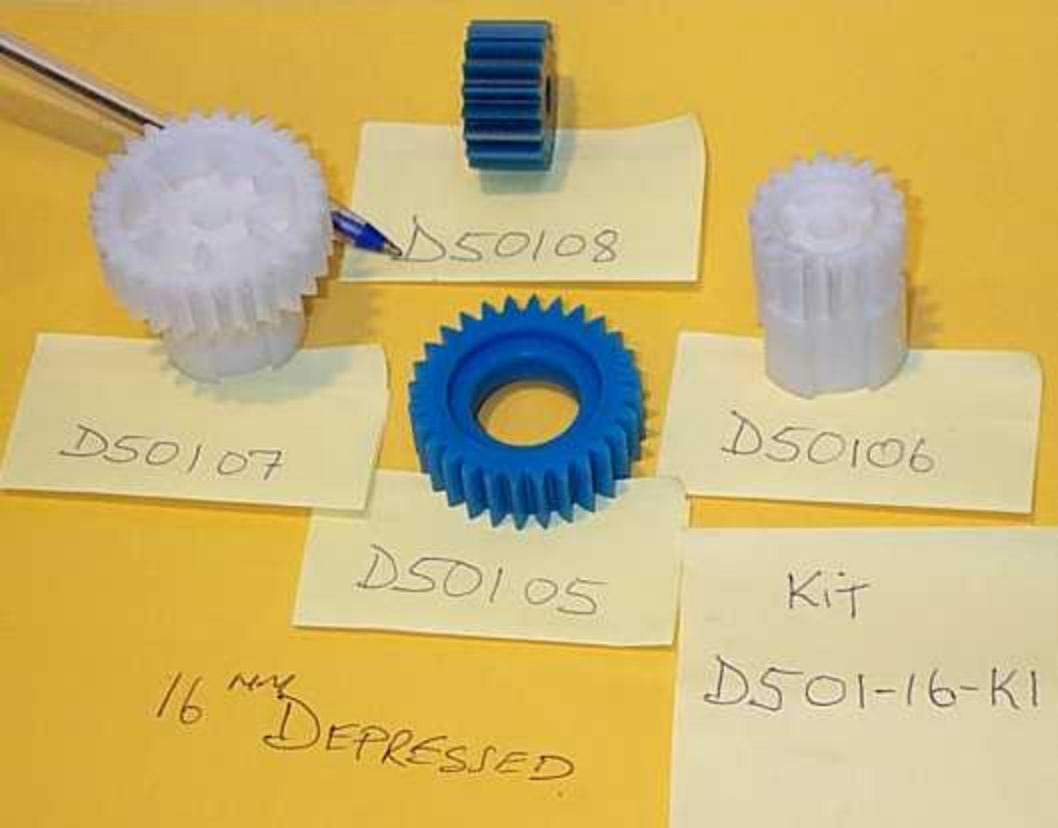
D53108



D53105

Kit

D501-16-K95



D50108

D50107

D50106

D50105

Kit

D501-16-K1

16 mm DEPRESSED